

USER *Manual*  
**IndiaFont** **v.4**



## Index

<b>Introduction</b> .....	<b>03</b>
<b>Getting Started</b> .....	<b>04</b>
Key Features .....	05
<b>User Interface &amp; Tool</b> .....	<b>06</b>
Move Tool .....	07
Text Tool .....	08
Pan Tool.....	09
Zoom Tool.....	10
Shape Tool.....	11
Art Library .....	12
Color Swatches .....	13
Gradient Swatches .....	14
Drop Shadow.....	15
Image Filters.....	16
Layers.....	17
Transform .....	18
Align.....	19
Opacity .....	20
Color Cooler .....	20
Copy to External.....	20

<b>How IndiaFont V4 Works</b> .....	<b>21</b>
Typing Method .....	21
Font Selection.....	22
Variable Concept .....	23
Alom-Wilom .....	24
50+ Kana's .....	25
Magnetic Selection .....	26
Exporting Files.....	27
<b>Keyboard Shortcuts</b> .....	<b>28</b>
<b>FAQ</b> .....	<b>29</b>
<b>Support Channels</b> .....	<b>30</b>
<b>Thank you</b> .....	<b>31</b>





Welcome to IndiaFont V4...

The ultimate tool for unleashing your creativity in the world of calligraphy and typography. **IndiaFont V4 is not just a software**; it's a canvas where your words transform into artistic masterpieces.

Whether you are a professional Graphic designer, a passionate artist, or someone who simply loves the art of writing, IndiaFont V4 empowers you to create stunning and expressive typography effortlessly.



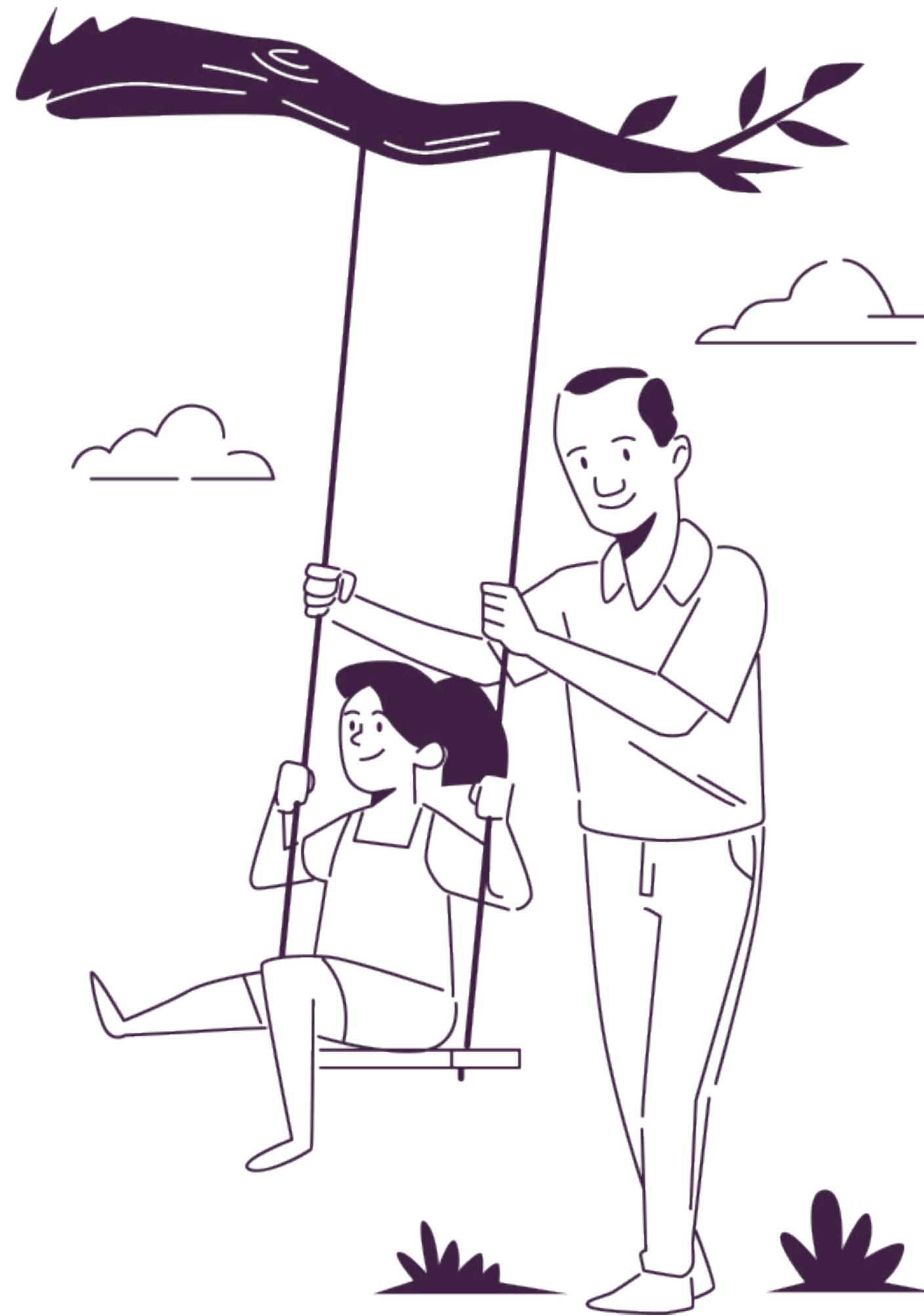


## What is IndiaFont V4?

IndiaFont V4 is a **powerful calligraphy font software** developed by ArtoMania Studio Pvt Ltd. It is meticulously designed to cater to the diverse linguistic needs of India, offering an **extensive collection of calligraphy fonts** for **Hindi, Marathi, Gujarati, and English** languages. With IndiaFont V4, you can seamlessly blend tradition with modernity, creating visually appealing designs that captivate the eye.

## What Sets IndiaFont V4 Apart?

IndiaFont V4 simplifies the art of calligraphy by offering an innovative approach to text customization. **The Variable Concept** allows you to explore numerous design options for every letter, ensuring that your calligraphy stands out. The **Alom-Wilom** feature adds a touch of elegance to your designs, while the **Magnetic Selection Tool** simplifies complex arrangements.



## Why Choose IndiaFont V4?

**Effortless Typing:** Enjoy easy typing with the phonetic-based typing system, eliminating the need for complex keyboard layouts.

**Creative Freedom:** Experiment with a vast collection of fonts and design options to express your creativity without limitations.

**Professional Results:** Craft professional-quality calligraphy artworks suitable for various applications, including digital art, invitations, and branding.

IndiaFont V4 is more than just software; it's your creative partner, enabling you to craft calligraphy masterpieces with unmatched ease and precision. Whether you're designing for personal projects or professional clients, IndiaFont V4 is the ultimate tool to elevate your calligraphy game. Let your creativity flow and discover the endless possibilities within IndiaFont V4!



## Easy Typing Method:

Say goodbye to complex typing methods. IndiaFont V4 offers a user-friendly phonetic-based typing system, allowing you to type effortlessly.



## Creative Calligraphy Fonts:

Explore a repository of over 300 meticulously crafted calligraphy fonts, meticulously designed to elevate your designs.



## Export and Import Options:

Save your creations in various formats (JPG, PNG, PDF, SVG) and import external images for further customization.



## Variable Concept:

Dive into the world of Variables, where each letter transforms into a myriad of artistic designs. With up to 12 variables for each letter, the possibilities for creative expression are endless.



## 50+ Kana's:

Kanas, representing the vowel "अ" in Hindi-Marathi, are adorned with 50+ creative design options. These variables enable you to customize your text in intricate detail.



## Art Library:

Access a wealth of pre-designed backgrounds, clip arts, and color arts tailored for Indian festivals and markets, providing a ready-made palette for your artistic endeavors.



## Alom-Wilom:

Enhance the start and end points of your text with the Alom and Wilom feature. Add exquisite flourishes that give your designs a unique touch.



## Advanced Tools:

From drop shadows to layer management, IndiaFont V4 equips you with a suite of advanced tools to enhance your designs further.



The screenshot shows the IndiaFont V4 software interface. At the top, there is a menu bar with 'File', 'Edit', 'Help', and 'Info'. Below the menu bar is a toolbar with 'Fonts' (set to 'AMS Abhimanyu'), 'Size' (set to '40'), 'Magnetic Selection' icons, 'Opacity' (set to '100'), and a 'Copy to External' icon. The main canvas area displays the text 'इंडियाफॉन्ट' (IndiaFont) in a stylized font, surrounded by a blue bounding box. Below the canvas is a 'Variable Panel' showing different design options for the selected letter. At the bottom, there is a row of 12 calligraphic font samples.

**Font Selection:** Choose from a variety of calligraphy fonts.

**Text Size:** Adjust the size of selected text.

**Text Alignment:** Align text left, center, right, or justified.

**Magnetic Selection:** Streamline the selection process.

**Opacity:** Control the transparency of objects.

**Color Picker:** Select custom colors for objects or text.

**Copy to External:** Copy your creations for use in other design software.

**Move Tool (V):** Select and move objects.

**Text Tool (T):** Change fonts, type, and edit text.

**Pan Tool (H):** Navigate the canvas when zoomed in.

**Zoom Tool:** Enlarge or reduce the canvas view.

**Shape Tool:** To draw basic shapes.

**Kana Tools:** To add and customize "Kana" variables.

**Alom-Wilom Feature:** Extend horizontal lines at the start and end of words in Devanagari fonts.

**Art Library:** Access pre-designed backgrounds, clip arts, and color arts.

**Color Swatches:** Choose colors from predefined swatches.

**Gradient Swatches:** Apply gradient colors to objects or text.

**Drop Shadow:** Add shadow effects to objects or text.

**Image Filters:** Enhance images with various filters.

**Layers:** Manage and organize objects in layers.

**Transform:** Scale, rotate, and flip objects.

**Align:** Align objects precisely on the canvas.

**Canvas Area:** This is where you create your designs.

**Bounding Box:** When you select an object, text, or image, a bounding box appears around it. You can resize, rotate, or move the selection using the bounding box handles.

**Variable Panel:** Located at the bottom, this panel displays different design options (variables) for the selected letter, providing creative flexibility.



### How to Use the Move Tool (Shortcut: V):

**Selection:** Click on the Move Tool icon in the left toolbar or press the “V” key on your keyboard to activate it.

**Selecting Objects:** Hover your cursor over the object, text, or image you want to move and click on it. The selected element will be surrounded by a bounding box, indicating it’s ready to be manipulated.

**Moving Objects:** Click and hold your mouse button on the selected object, then drag it to the desired location on the canvas. Release the mouse button to drop the object in its new position.

### Tips for Efficient Use:

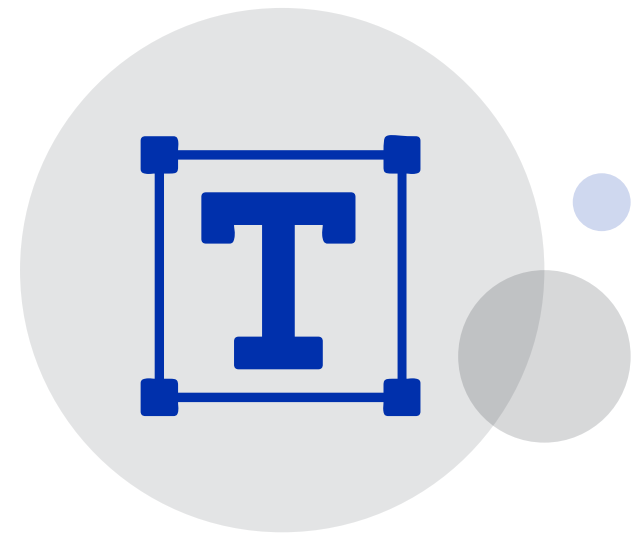
**Multi-Selection:** Hold down the Shift key on your keyboard while clicking on multiple objects. This allows you to move several elements simultaneously.

**Precise Movement:** For precise movement, use the arrow keys on your keyboard after selecting an object. Each press of an arrow key moves the selected object by a small distance, enabling accurate adjustments.



## *01. Move Tool*

The Move Tool in IndiaFont V4 is a fundamental feature that allows you to select and manipulate objects, text, or images on the canvas. This tool is essential for precise positioning and organizing elements within your design. Here’s how you can make the most out of the Move Tool:



## 02. Text Tool

The Text Tool in IndiaFont V4 is a powerful feature that allows you to add and customize text within your designs. Whether you're creating intricate calligraphy or adding essential information, understanding the Text Tool is crucial. Here's how you can utilize the Text Tool effectively:

### 🔄 How to Use the Text Tool (Shortcut: T):

**Activation:** Click on the Text Tool icon in the left toolbar or press the “**T**” key on your keyboard for the Text Tool.

**Creating Text:** After activating the Text Tool, click anywhere on the canvas. A blinking cursor appears, indicating that you can start typing.

**Entering Text:** Type your desired text. The text will appear on the canvas.

**Exiting Text Mode:** Press the “**ESC**” key on your keyboard to exit text editing mode. Your changes are saved, and the text is finalized. The bounding box comes, allowing you to font, size, color, and other properties.

**Editing Text:** Double-click on the text to enter typing mode, allowing you to modify the text's content.

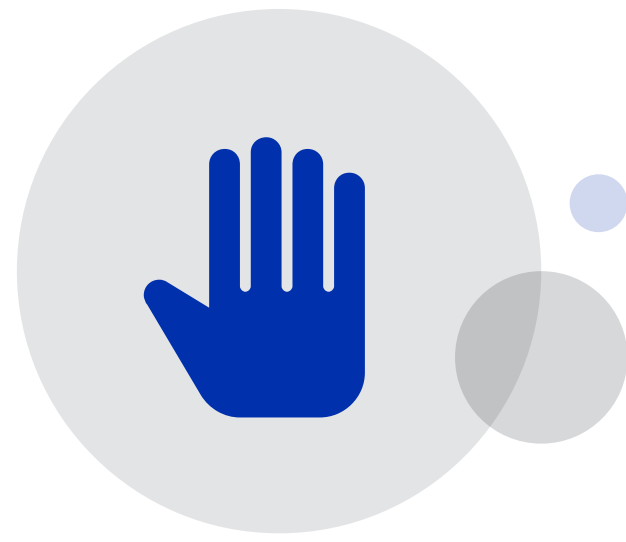
### 🔄 Tips for Efficient Use:

**Font Selection:** Before typing, ensure you've selected the desired font from the Top Toolbar. The chosen font will be applied to the text you enter.

**Changing Font Size:** Text Size option in the Top Toolbar to adjust the font size. Alternatively, can use the shortcut “**Shift + Ctrl + >**” to increase font size and “**Shift + Ctrl + <**” to decrease size.

**Avoiding Mouse Selection:** Instead of selecting individual letters with the mouse, use the keyboard. Press “**Shift**” along with the arrow keys to select specific letters, providing more control over the editing process.





### 03. Pan Tool

The Pan Tool in IndiaFont V4 is an essential feature that allows you to navigate the canvas with ease, especially when working on detailed designs or intricate typography. Here's how you can effectively use the Pan Tool to enhance your workflow:

#### How to Use the Pan Tool (Shortcut: H):

**Activation:** Click on the Pan Tool icon in the Left Toolbar or press the “H” key on your keyboard to activate the Pan Tool.

**Navigating the Canvas:** Once activated, move your cursor to the canvas area. Click and hold the left mouse button. Now, you can drag the canvas in any direction to view different parts of your design.

**Alternative Method:** Instead of clicking on the Pan Tool icon, you can use an alternative method to activate it. While working on any tool, press and hold the Space bar. Your cursor will change into the hand icon, indicating the Pan Tool is active. Click and drag the canvas to move around.

#### Tips for Efficient Use:

**Zoom In for Details:** Use the Zoom Tool (Shortcut: Z) to zoom in on specific parts of your design that require detailed attention.

**Pan Tool for Precision:** While zoomed in, activate the Pan Tool to navigate precisely within the zoomed area. This allows you to focus on intricate details without losing the overall view of your design.

**Scrolling for Larger Designs:** For larger designs that extend beyond the canvas boundaries, the Pan Tool is invaluable. It enables smooth scrolling both horizontally and vertically, ensuring you can work on extensive projects seamlessly.



## 04. Zoom Tool

The Zoom Tool in IndiaFont V4 is a fundamental feature that allows you to magnify or reduce the view of your canvas. Whether you need to focus on fine details or view your entire design, the Zoom Tool helps you achieve the perfect perspective. Here's how you can make the most out of the Zoom Tool:

### How to Use the Zoom Tool:

#### Zooming In:

1. Click on the **Zoom In icon** in the Left Toolbar or use the **Shortcut "Z"** on your keyboard to activate the Zoom In Tool.
2. To zoom in on a specific area, click on the canvas. Each click will increase the zoom level, bringing the selected area closer into view.
3. You can also use the **scroll wheel** on your mouse for quick zooming in and out.

#### Zooming Out:

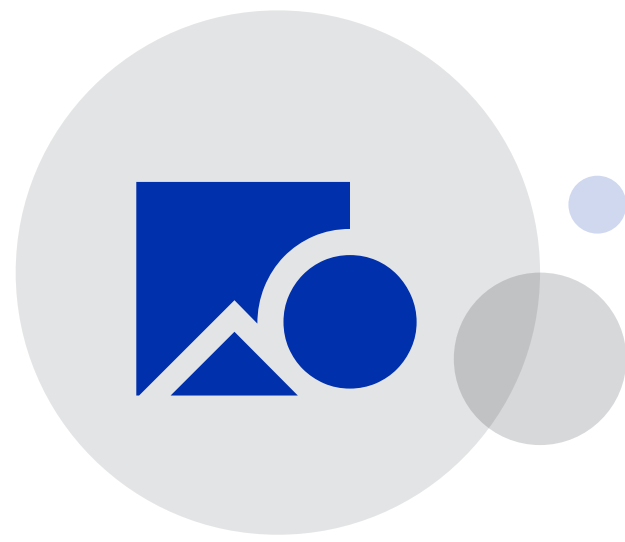
1. Click on the **Zoom Out icon** in the Left Toolbar or use the **Shortcut "Alt+Z"** to activate the Zoom Out Tool.
2. To zoom out and view more of your design, click on the canvas. Each click will decrease the zoom level, allowing you to see a broader perspective.
3. You can also use the **scroll wheel** on your mouse for quick zooming in and out.

#### Zooming to Fit:

For a quick overview of your entire canvas, press "**Ctrl + 0**" (zero) on your keyboard. This command adjusts the zoom level to fit your entire design within the canvas area.

#### Combining with Pan Tool:

Combine the Zoom Tool with the Pan Tool (Shortcut: H) to navigate the canvas efficiently. Zoom in on a particular area, then use the Pan Tool to move around within the zoomed view for precise adjustments.



## 05. Shape Tool

The Shape Tool in IndiaFont V4 provides a quick and convenient way to add basic shapes to your design. Whether you need rectangles, circles, or polygons, this tool streamlines the process of integrating geometric elements into your creative compositions. Here's how you can effectively utilize the Shape Tool:



### How to Use the Shape Tool:

#### Selecting a Shape:

Click on the Shape Tool icon in the Left Toolbar or use the respective shortcut key:

- **Rectangle:** Shortcut - "M"
- **Rounded Rectangle:** Shortcut - "Shift + M"
- **Circle:** Shortcut - "L"
- ★ **Star:** Shortcut - "S"
- ◆ **Polygon:** Shortcut - "X"

#### Drawing a Shape:

After selecting a shape, click and drag on the canvas. As you drag, the shape will expand or contract according to your cursor movement.

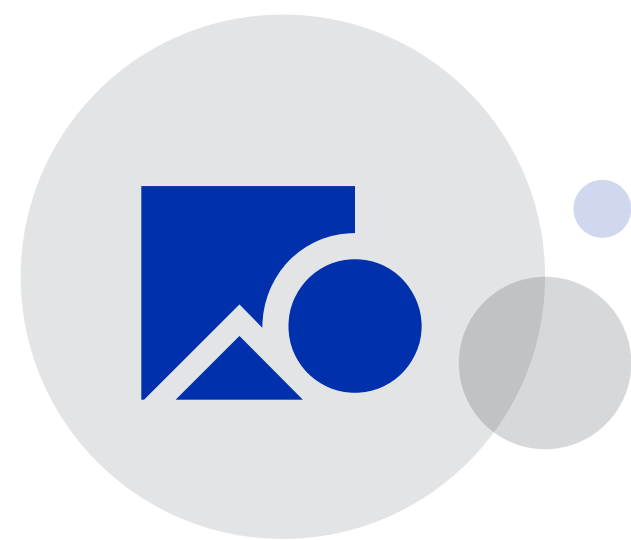
#### Maintaining Proportions:

To maintain the shape's proportions (for rectangles and circles), hold down the "Shift" key while dragging. This ensures your shapes are perfectly square or circular.

#### Adjusting Shape Properties:

After drawing a shape, you can modify its properties such as size, color, and outline using the options in the Right Toolbar.





## 06. Art Library

The Art Library in IndiaFont V4 is a treasure trove of pre-designed backgrounds, clip arts, and color arts, specifically curated for Indian festivals and market applications. This feature enables users to effortlessly enhance their designs with ready-made elements, saving time and boosting creativity. Here's how to effectively use the Art Library:

### Understanding the Art Library Sections:

**Backgrounds:** Explore a variety of background categories, such as **Featured, Festive, Abstract, Elements, Watercolor, Texture, Geometric,** and more. These backgrounds provide a perfect canvas for your calligraphy and design projects.

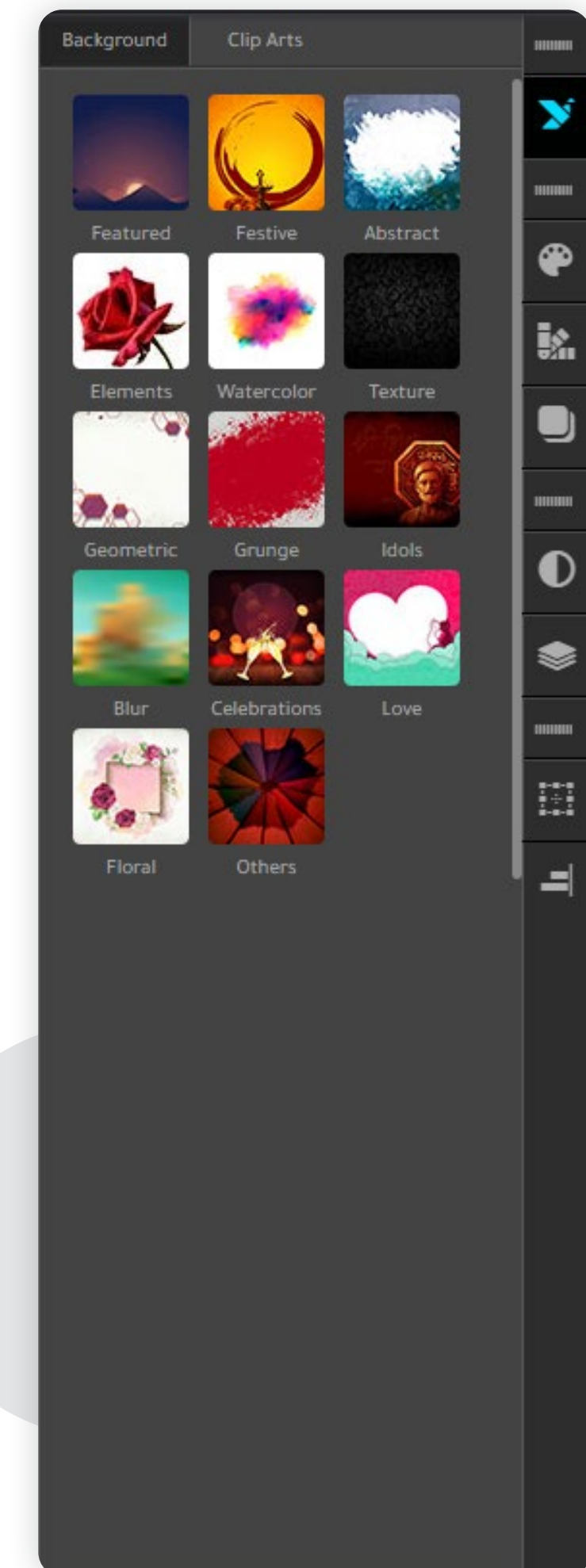
**Clip Arts:** Access an extensive collection of clip arts, including **Animals, Birds, Creative, Dividers, Festive, God, Human, Icons, Love, Nature, Ornamental, Shapes, Text Related, Wedding, Wishes,** and more. These clip arts can be easily integrated into your compositions.

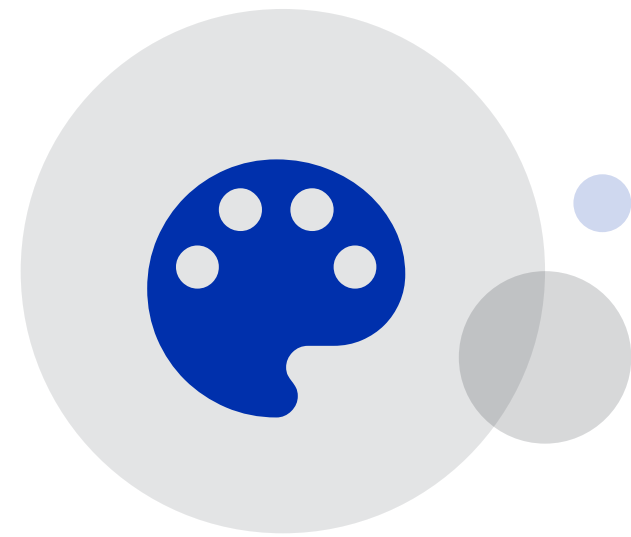
### How to Use the Art Library:

**Selecting an Art Element:** Click on the desired category within Backgrounds or Clip Arts. Browse through the available options until you find the perfect element for your design.

**Applying the Art Element:** Click on the chosen art element, and it will be seamlessly integrated into your canvas. You can resize, rotate, or reposition the element to fit your composition.

**Resizing and Rotating:** Use the resizing handles to adjust the size of the art element. To rotate, click and drag the rotation handle, which is at the top of bounding box.





## 07. Color Swatches

IndiaFont V4 provides a rich selection of pre-defined color swatches, enabling users to effortlessly add vibrant colors to their designs. These color swatches simplify the process of choosing harmonious and appealing color combinations for calligraphy, illustrations, and other graphic projects. Here's how to effectively use the Color Swatches feature:



**Color Selection:** Click on the object or text you want to color. Then, navigate to the Color Swatches section on the right toolbar.

**Pre-Defined Colors:** Explore the diverse array of pre-defined color swatches available. These swatches are thoughtfully curated to include a wide spectrum of hues and shades.

**Applying Colors:** Click on the desired color swatch, and it will be instantly applied to your selected object or text. This swift application ensures efficiency in your design process.





## 08. Gradient Swatches

IndiaFont V4 offers a versatile range of gradient swatches, allowing users to add depth, dimension, and visual interest to their designs. Gradients enable smooth color transitions and can evoke various moods within your compositions. Here's a comprehensive guide on how to effectively use Gradient Swatches in IndiaFont V4:



**Selection:** Click on the object or text that you want to apply a gradient to. Then, navigate to the Gradient Swatches section on the right toolbar.

**Exploring Gradient Options-** Pre-Defined Gradients: IndiaFont V4 provides a selection of pre-defined gradient swatches. These gradients feature seamlessly blended colors, ranging from subtle transitions to bold contrasts.

**Applying Gradients:** Click on the desired gradient swatch, and it will be instantly applied to your selected object or text. Gradients add depth and a dynamic visual quality to your designs.







## 09. Drop Shadow

IndiaFont V4 offers a powerful Drop Shadow feature that allows users to add depth, realism, and visual prominence to objects or text in their designs. Drop shadows create the illusion of objects casting shadows on surfaces, enhancing the overall aesthetics of your compositions. Here's a comprehensive guide on how to effectively use the Drop Shadow feature in IndiaFont V4:

### Configuring Drop Shadow:

**Opacity:** Adjust the opacity to control the transparency of the shadow. Higher opacity values create darker, more prominent shadows, while lower values produce subtle, translucent shadows.

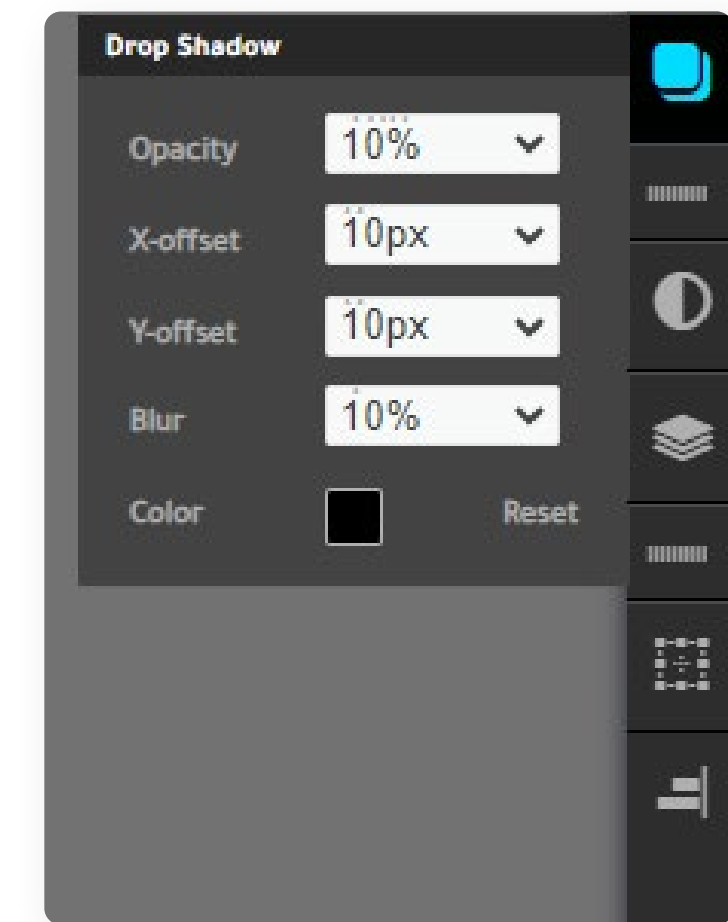
**X-Offset and Y-Offset:** Modify the X and Y offset values to set the direction in which the shadow extends from the object. Positive X values move the shadow right, negative X values move it left. Positive Y values move the shadow down, negative Y values move it up.

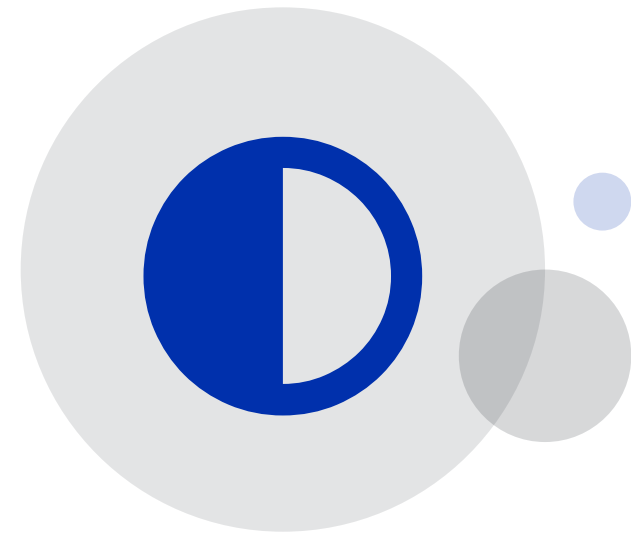
**Blur:** Use the blur to control the sharpness of the shadow edges. Higher blur values create softer, more diffused shadows, while lower values produce crisp, defined shadows.

**Color Selection:** Click on the color selection box to choose the shadow's color. You can opt for a color that complements the object or experiment with creative shadow colors to achieve specific visual effects.

**Reset:** If you wish to remove the shadow or want to start again, just hit on RESET.

**Applying Drop Shadow:** Drop shadow effect will apply instantly to the selected object or text as you make changes.





## 10. Image Filters

IndiaFont V4 introduces a diverse range of Image Filters, allowing users to effortlessly enhance their images and designs with various visual effects. Image Filters are powerful that can transform the mood, tone, and style of your graphics. Here's a detailed guide on how to utilize the Image Filters feature in IndiaFont V4:

**Blur:** Softens the image, creating a dreamy or hazy effect. Adjust the blur intensity to control the level of blurriness.

**Hue/Saturation:** Alters the overall color tone of the image. Modify the hue to change the color, and adjust saturation to control the intensity of colors.

**Contrast/Brightness:** Enhances or reduces the contrast and brightness of the image. Boost contrast for sharper details or decrease it for a softer look. Adjust brightness to control overall lightness.

**Invert:** Inverts the colors of the image, creating a negative effect. Dark areas become light, and vice versa.

**Sepia:** Adds a warm brownish tone to the image, giving it a vintage, old-fashioned appearance.

**Black & White:** Converts the image to gray-scale, removing all color information. Useful for creating classic, minimalist visuals.

**Brownie:** Applies a nostalgic, vintage filter with subtle color enhancements, reminiscent of old photographs.

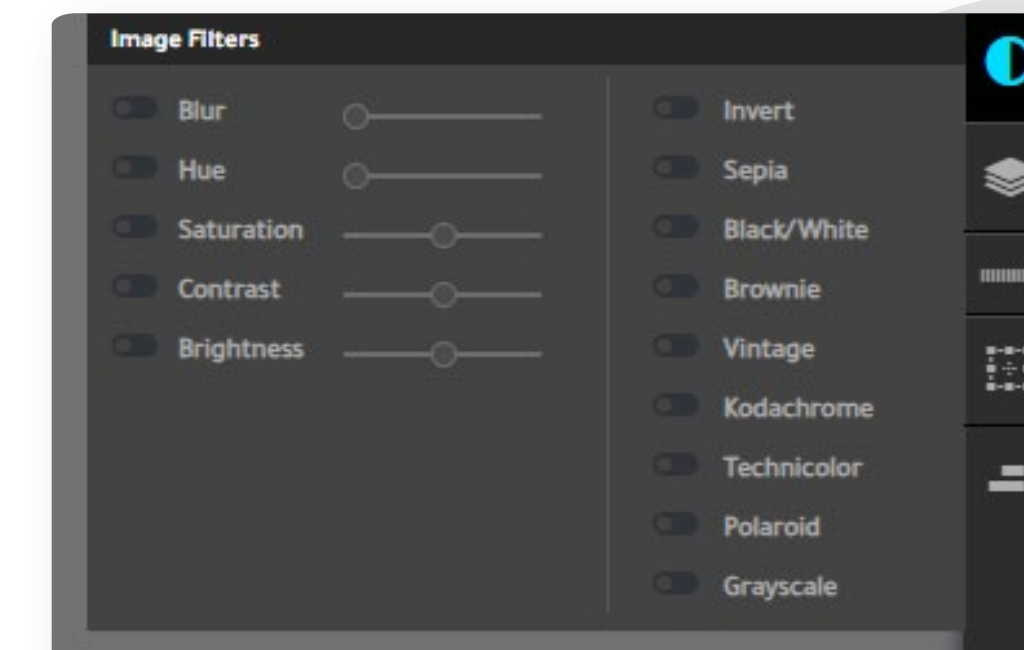
**Vintage:** Mimics the appearance of vintage photos, adding warmth, vignetting, and faded colors.

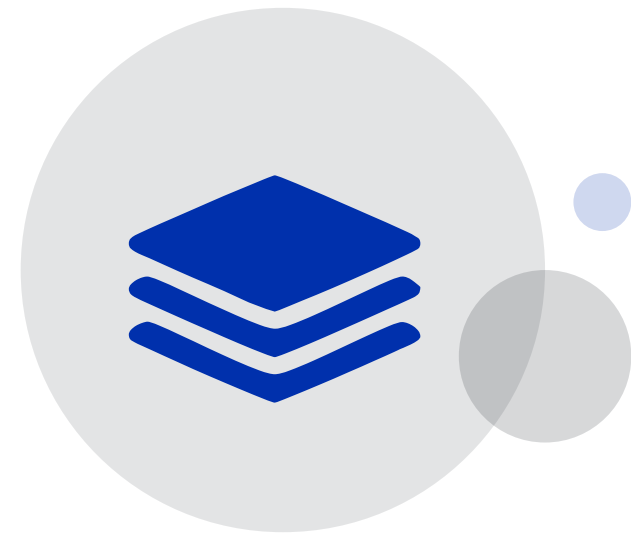
**Kodachrome:** Replicates the vibrant, saturated colors characteristic of Kodachrome film.

**Technicolor:** Creates a colorful, fantasy-like effect by emphasizing specific hues in the image.

**Polaroid:** Simulates the appearance of Polaroid photos, complete with a white border and subtle color shifts.

**Grayscale:** Converts the image to black and white, eliminating all color information for a grayscale effect.





## 11. Layers

IndiaFont V4 provides an intuitive and powerful Layers feature, enabling users to organize, manage, and enhance their designs with precision. Layers allow for efficient handling of individual elements within a composition, enabling seamless editing, rearrangement, and customization.

**Concept:** Layers are like transparent sheets stacked on top of each other. Each layer can hold different objects, such as text, shapes, or images. Objects on higher layers appear in front of those on lower layers.

**Layer Panel:** Locate the Layers panel on the right toolbar. Click on it to open the Layers panel, revealing the list of existing layers in your project.

**Renaming Layers:** Double-click on the layer name to rename it, allowing for better organization, especially in complex projects.

**Layer Visibility:** Toggle the eye icon next to a layer to make it visible or invisible. Invisible layers are hidden from view but still exist in the project.

**Locking Layers:** Click on the padlock icon to lock or unlock a layer. Locked layers prevent accidental edits, ensuring the content remains unchanged.

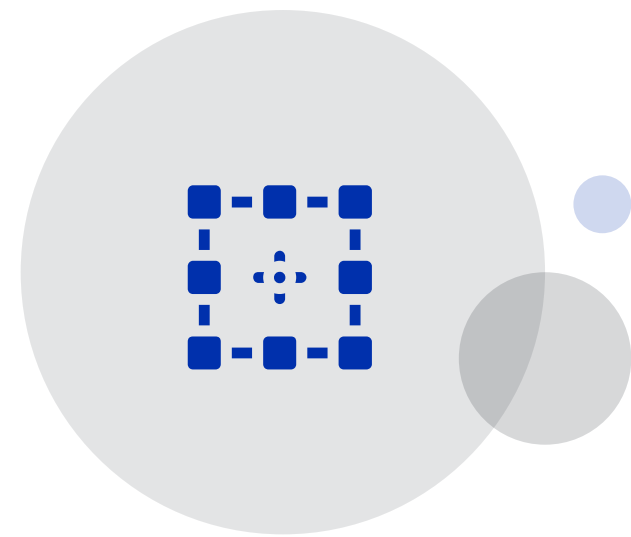
**Layer Order:** Drag and drop layers within the panel to change their stacking order. Layers at the top of the list appear above others in the design.

**Deleting Layers:** Select a layer and click on the “Delete” button in the Layers panel to remove it from the project.

**Creating a New Layer:** Each time when you add new text, shape artwork or image, it creates new layer for you automatically.







## 12. Transform

IndiaFont V4 offers a robust Transform tool that empowers users to manipulate and refine objects within their designs. Whether you need to resize, rotate, skew, or flip elements, the Transform tool provides precise controls to achieve the desired visual effects.

### Exploring Transform Options:

**Selecting Objects:** Click on the object you want to transform. Once the object is selected, the bounding box with transformation handles will appear around it.

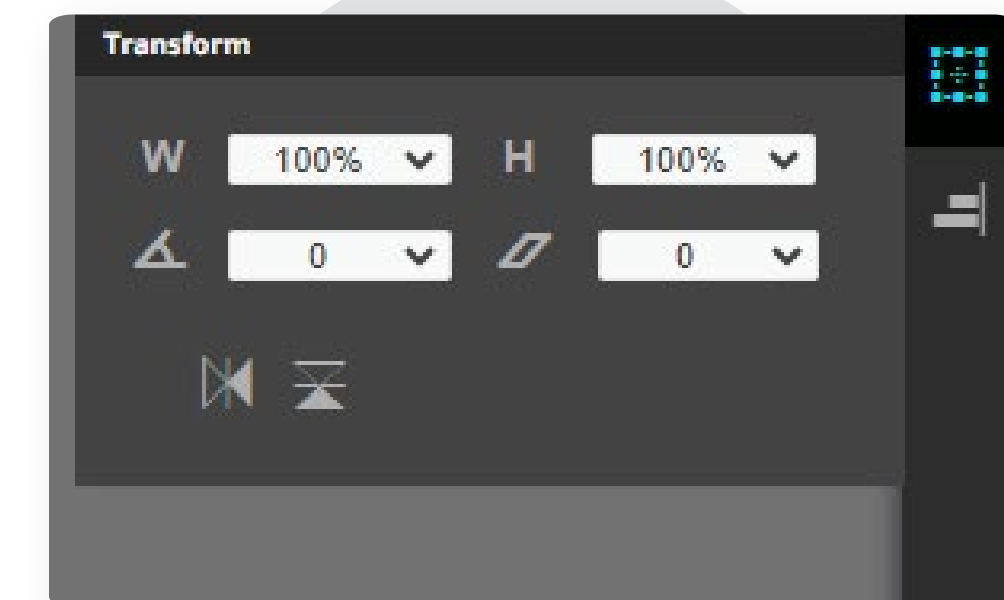
**Transform Icon:** In the right toolbar, locate and click on the Transform tool icon.

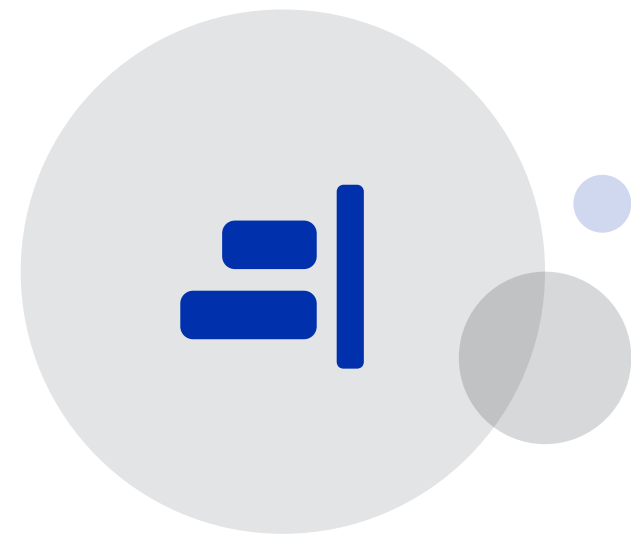
**Scaling:** To resize the object proportionally, click and drag any corner handle while holding the Shift key. This maintains the aspect ratio of the object. Or use HEIGHT & WIDTH values to be precious.

**Rotation:** Place your cursor top of the bounding box handle. When the cursor changes to a curved arrow, click and drag to rotate the object. Or use the rotation field and enter value.

**Skewing:** To skew the object, hold Shift key, click and drag the middle handle on any side of the bounding box. This allows you to slant the object horizontally or vertically. Or use the skew field and enter value.

**Flip Horizontal/Vertical:** In the top toolbar, you'll find the Flip Horizontal and Flip Vertical icons. Select the object and click on these icons to flip the object along the horizontal or vertical axis.





## 12. Align

In IndiaFont V4, the Align tool is a powerful feature that allows users to precisely arrange objects, text, or elements on the canvas. Whether you're working on a complex design or aligning multiple elements, the Align tool ensures that your creations are perfectly organized.



### Exploring Align Options:

**Align Left:** This option aligns the objects to very left edges of the canvas.

**Align Center:** Aligns the horizontal center of the canvas.

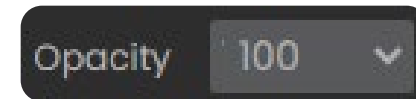
**Align Right:** Aligns the objects to very right edges of the canvas.

**Align Top:** Aligns the objects to top edges of the Canvas.

**Align Middle:** Aligns the objects to vertical center of the canvas.

**Align Bottom:** Aligns the objects to bottom edges of the canvas.





### 13. Opacity Tool

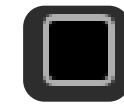
The Opacity tool in IndiaFont V4 offers users control over the transparency of objects, text, or images within their designs. Adjusting the opacity can add depth, create subtle overlays, or enhance the overall visual appeal of your artwork.

**Select the Object:** First, click on the object, text, or image on the canvas that you want to adjust the opacity for.

**Go to the Opacity Panel:** On the top toolbar, you'll find the Opacity option. Click on it to open the Opacity panel.

**Numeric Input:** You can also directly input the opacity percentage in the numeric field next to the slider. This provides precise control over the opacity level.

**Creating Overlays:** Adjusting the opacity is useful for creating overlays, allowing you to blend different elements seamlessly. For example, you can place a semi-transparent shape over an image to create a subtle background effect.



### 14. Color Picker Tool

The Color Picker tool in IndiaFont V4 allows you to precisely select and apply colors to objects and text within your designs. Whether you want to match specific hues, create harmonious color schemes, or experiment with various tones, the Color Picker tool provides seamless control over your color choices.

**Select the Object:** First, click on the object, text, or image on the canvas that you want to apply a color to.

**Open the Color Picker:** On the top toolbar, click on the Color Picker icon to access the color selection panel.

**Basic Color Palette:** The Color Picker panel offers a basic color palette with a spectrum of colors. Click on any color to apply it to the selected object.



### 15. Copy to External

The “Copy to External” tool in IndiaFont V4 serves as a convenient feature that allows users to seamlessly transfer their created calligraphy artwork to other design software or platforms.

**Access “Copy to External”:** On the top toolbar, locate and click the “Copy to External” icon. This action copies the selected text or object to the clipboard, making it ready for pasting into external software.

**Navigate to External Software:** Open the external design software where you want to integrate your IndiaFont artwork.

**Paste the Artwork:** Inside the external software, paste the copied content from the clipboard (Ctrl + V or right-click and select Paste).

**Vector Compatibility:** The copied content retains its vector properties, allowing for high-quality scalability and editing flexibility in external software.

**Limitations:** This will work fine with all the design softwares which supports direct SVG paste feature. Such as Adobe Illustrator. But for Coral Draw, you may need to import SVG, direct paste wont work.





## 1. Typing Method

IndiaFont V4 simplifies the typing process, ensuring that you can effortlessly create stunning calligraphy without the hassle of learning complex typing skills.

### Introduction to Phonetic-Based Typing:

Traditionally, typing in Indian regional languages like Hindi and Marathi required knowledge of specific keyboard layouts and character mappings. IndiaFont V4 simplifies this process by introducing a phonetic-based typing system. In this method, users can type words phonetically using English letters, and the software automatically converts them into the corresponding Devanagari script. For example, typing “RAMA” in English results in “राम” in Devanagari.

### Explanation of Keyboard Layouts:

IndiaFont V4 provides a clear and logical keyboard layout that aligns with the phonetic sounds of Hindi and Marathi languages. Here’s a breakdown of the key elements:

English Letters Correspond to Devanagari Sounds: Each English letter on your keyboard represents a specific sound in Hindi and Marathi languages. When you type these letters, IndiaFont V4 intelligently converts them into the corresponding Devanagari characters.

## 2. Font Selection

The Font Selection tool in IndiaFont V4 is the gateway to a vast world of creative possibilities. It allows users to choose from an extensive collection of calligraphy fonts tailored for Hindi, Marathi, Gujarati, and English languages. Here's how to effectively utilize the Font Selection tool to enhance your designs:

### 1. Accessing the Font Selection:

**Click on Font Selection:** Located at the top of the interface, clicking on this icon opens a dropdown menu showcasing the available fonts.

**Scroll and Preview:** Scroll through the font list. As you hover over each font name, the text in the canvas will change, allowing you to preview how the font looks with your content.

**Search Functionality:** If you have a specific font in mind, you can use the search bar within the Font Selection dropdown. Simply type the font name or a related keyword to quickly locate the desired font.

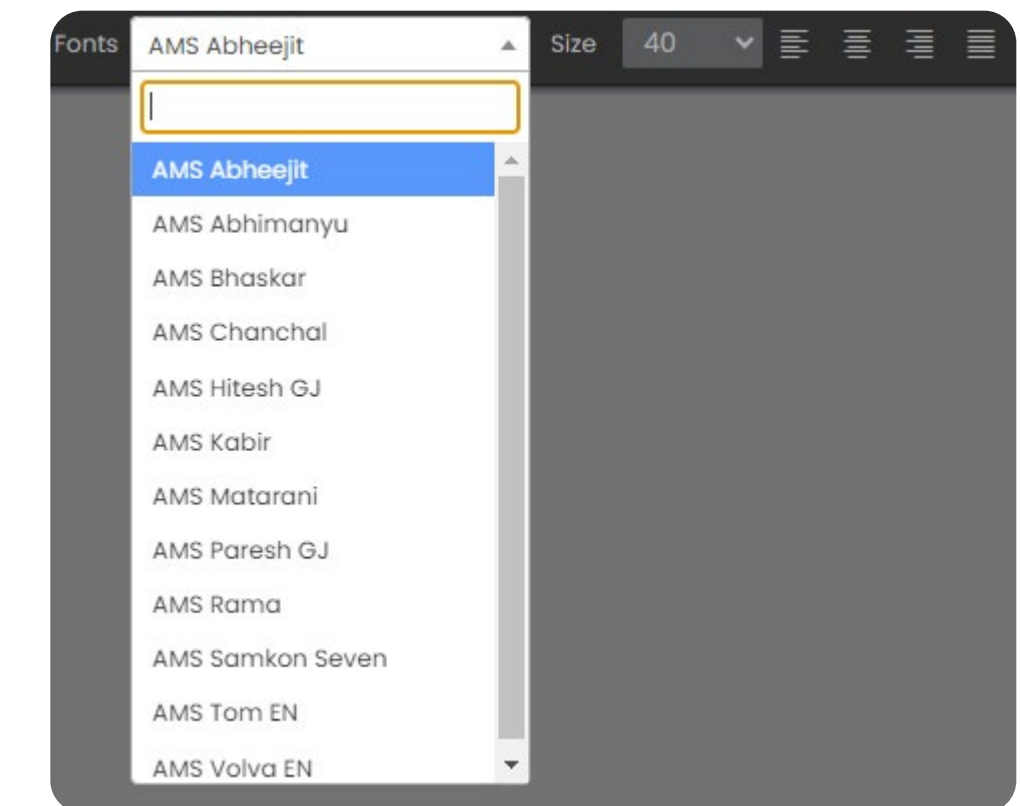
### 2. Font Customization:

**Select Desired Font:** Click on the font name to apply it to the selected text or object on the canvas. The font will instantly update, reflecting the chosen style.

**Adjust Font Size:** After selecting a font, you can adjust its size using the Text Size tool in the top toolbar. Alternatively, you can use the shortcut Shift + Ctrl + > to increase font size and Shift + Ctrl + < to decrease font size.

### \*\*3. Text Alignment:

**Alignment Options:** Align your text left, center, right, or justify it for various typographical styles and layouts.





### 3. Variable Concept

IndiaFont V4's unique feature is its extensive collection of letter variables. When you select a single letter, you'll see up to 12 design options (variables) for that letter inside of Variable Panel. These variables are categorized based on the position of the letter in the word:

**Start of the Word:** Variables designed for the beginning of a word.

**Middle of the Word:** Variables suited for letters placed in the middle of a word.

**End of the Word:** Variables tailored for letters positioned at the end of a word.

#### How to Use:

**Select a Letter:** Begin by selecting a specific letter within your text using the Text Tool.

**Explore Letter Variables:** Navigate to the Variable Panel, usually located at the bottom of the interface. Here, you'll find a range of design options corresponding to the selected letter.

**Choose the Desired Design:** Browse through the available letter variables and select the design that best complements your calligraphy. Click on the desired variable to apply it to the selected letter.

**Experiment and Combine:** Feel free to experiment with different letter variables within the same word. Mix and match designs to create visually appealing and unique calligraphic compositions.

#### Pro Tips:

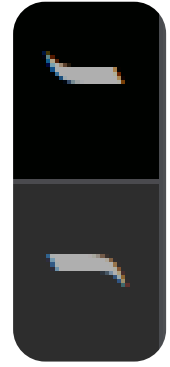
**Consistency Matters:** Maintain a consistent theme across all letters in your text to achieve a polished and harmonious look in your calligraphy.

**Play with Combinations:** Combine different variables within a single word to add depth and complexity to your calligraphy. Experimentation often leads to stunning results.

Variable Panel







## 4. Alom-Wilom

Alom and Wilom: Modify the “**Shirorekha**,” the horizontal line above words in Hindi-Marathi. Use Alom to extend the line at the beginning of the word and Wilom to extend it at the end. Choose from up to 12 variables for each, ensuring your calligraphy stands out with enhanced start and end points.

### How to Use:

**Position the Cursor:** Place the cursor at the beginning (Alom) or end (Wilom) of the word where you wish to apply the extension.

**Activate Alom or Wilom:** Click on the respective tool in the Left Toolbar or use the designated keyboard shortcuts to activate Alom (Shift + “<”) or Wilom (Shift + “>”).

**Explore Design Options:** Once applied just select the newly added element, and the Variable Panel will display upto 12 design options for Alom or Wilom. Browse through these designs and select the one that enhances the overall aesthetic of your calligraphy.

**Customize and Apply:** Click on the chosen design within the Variable Panel to apply it.

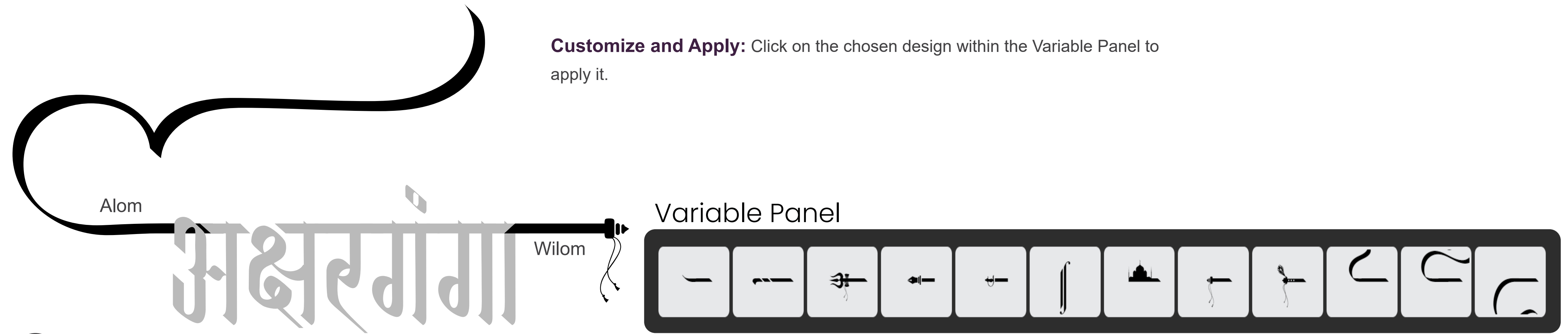
### Pro Tips:

#### Balance and Symmetry:

Maintain a sense of balance between Alom and Wilom extensions. Consistent sizing and symmetry enhance the visual appeal of the calligraphy.

#### Blend with Letter Variables:

Combine Alom-Wilom extensions with letter variables to create intricate and harmonious calligraphic compositions.





## 5. 50+ Kana's

In IndiaFont V4, the Kana Tools are indispensable for anyone working with Devanagari languages like Hindi and Marathi. Kana, specifically “अ” in Hindi-Marathi, is a vowel symbol used in conjunction with consonants to form words. IndiaFont V4 provides extensive customization options for Kana, ensuring your calligraphy and typography work stands out. Here's how to make the most of the Kana Tools:

### How to Access Kana Tools:

#### Shortcut Keys (while in typing mode):

**First Kana:** Shortcut - “A”

**Second Kana:** Shortcut - “[“

**Third Kana:** Shortcut - “{“

**Fourth Kana:** Shortcut - “]”

**Fifth Kana:** Shortcut - “}”

#### Using the Left Toolbar:

The Kana Tools are prominently displayed on the Left Toolbar. Click on the respective Kana icon to add it to your text while typing.

### How to Use:

**Select Text (KANA):** Choose the text containing the common character (Kana) you want to customize.

**Activate Kana Tool:** Click on the Kana tool in the Left Toolbar or use the corresponding keyboard shortcut (e.g., “a” for the first Kana).

**Explore Design Variations:** Upon activation, the Variable Panel will display numerous design options for the selected Kana. Browse through these variations and select the one that aligns with your artistic vision.

**Apply and Refine:** Click on the chosen design within the Variable Panel to apply it to the selected Kana.

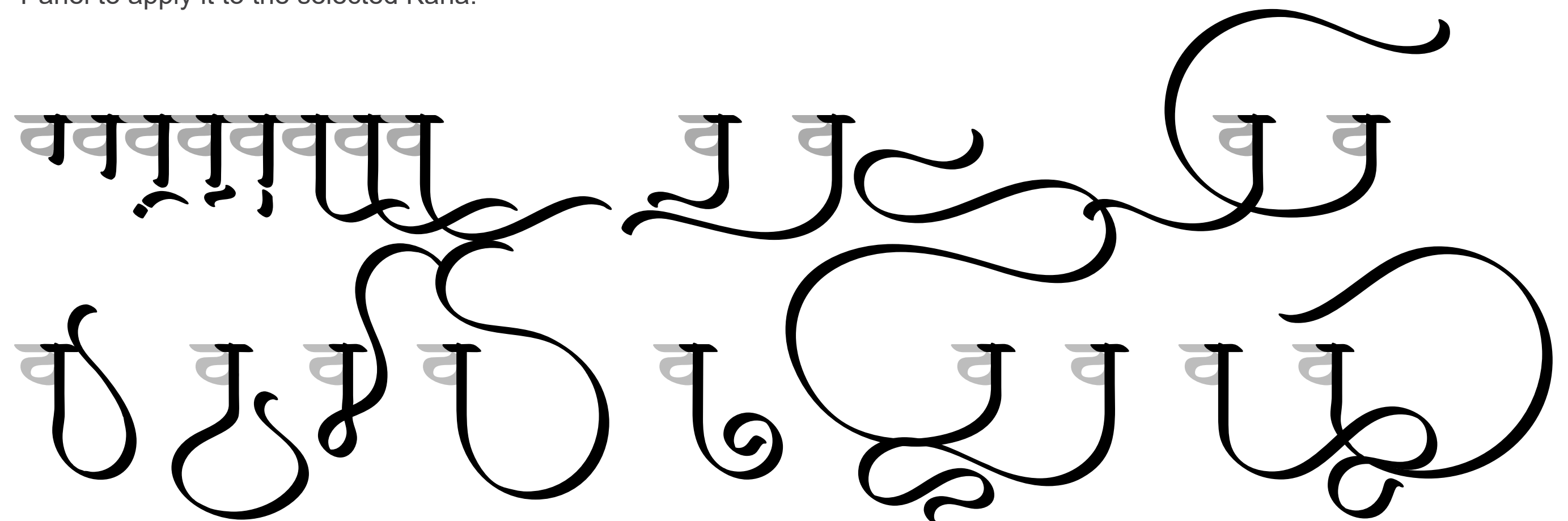
### Pro Tips:

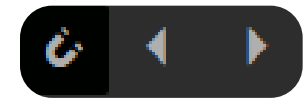
#### Blend with Context:

Consider the context of the surrounding letters when choosing Kana designs. Designs that complement adjacent characters enhance the overall flow of the calligraphy.

#### Experiment Freely:

Don't hesitate to explore all available Kana options. Trying different designs can lead to unexpected and visually appealing results in your calligraphy.





## 6. Magnetic Selection Tool

The Magnetic Selection Tool in IndiaFont V4 is a powerful feature designed to simplify the intricate process of selecting individual letters, especially in complex Devanagari scripts like Hindi and Marathi.

This tool streamlines the selection of letters, ensuring precision and ease while customizing your calligraphy. Here's how you can effectively use the Magnetic Selection Tool:



### How to Use:

**Magnetic Selection Tool Icon:** Located in the top toolbar, the Magnetic Selection Tool is represented by an icon resembling a horseshoe magnet. Click on this icon to activate the tool.

**Selecting the First Letter:** Once the Magnetic Selection Tool is activated, the first letter is automatically selected.

**Navigating Through Letters:** Click on the right arrow icon to move to the next letter in your text. With each click, the next letter in the sequence is selected, making it effortless to customize each character individually.

**Efficient Letter Customization:** The Magnetic Selection Tool enables you to customize letters with precision. You can apply different variables, styles, and effects to individual letters, ensuring a high level of detail in your calligraphy.



## 6. Exporting Files

IndiaFont V4 offers seamless options for both exporting your meticulously crafted calligraphy creations and importing external images for further customization. Here's a comprehensive guide on how to manage these processes:

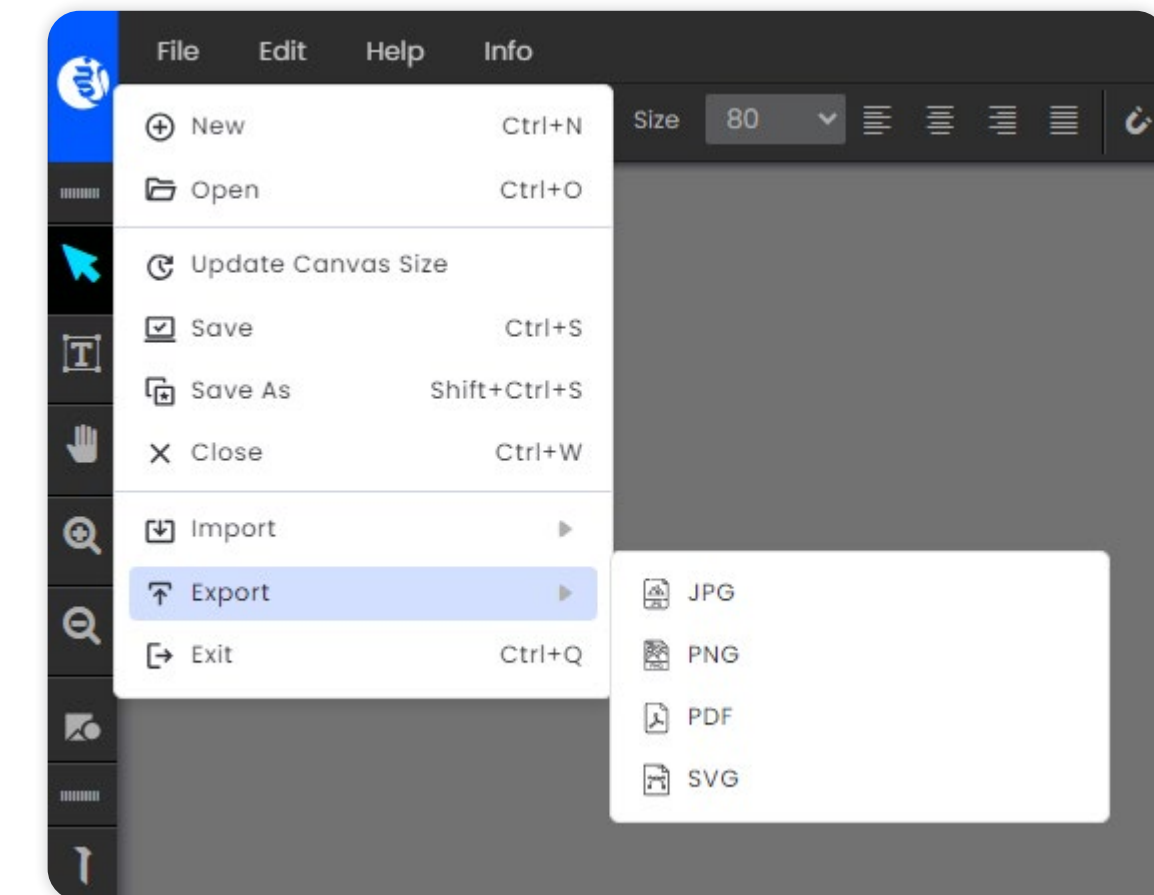
**Access the Export option:** Navigate to the **File Menu** in the Menu Bar and select "**Export.**"

**Choose the File Format:** IndiaFont V4 supports several formats, including **JPG, PNG, PDF, and SVG**. Select the desired format based on your project requirements.

**Select Export Location:** Choose the destination folder on your computer where you want to save the exported file. Provide a suitable file name for easy identification.

**Confirm and Export:** Click "Export" to save your calligraphy artwork in the selected format. IndiaFont V4 will process the file and save it to the specified location.

**Vector for Scalability:** If your design involves intricate details or text, consider exporting as SVG (Scalable Vector Graphics). SVG files maintain quality regardless of size and are excellent for scalability.



New File	Ctrl + N
Open File	Ctrl + O
Save File	Ctrl + S
Save As	Shift + Ctrl + N
Close	Ctrl + W
Exit	Ctrl + Q
Undo	Ctrl + Z
Redo	Shift + Ctrl + Z
Cut	Ctrl + X
Copy	Ctrl + C
Paste	Ctrl + V
Delete	Del
Group	Ctrl + G
Ungroup	Shift + Ctrl + G
Lock	Ctrl + L
Unlock All	Shift + Ctrl + L

Send Upward	Ctrl + ]
Send Backward	Ctrl + [
Send to top	Shift + Ctrl + ]
Send to bottom	Shift + Ctrl + [
ALOM	Shift + <
WILOM	Shift + >
Move Tool	V
Text Tool	T
Pan Tool	H or Hold Space
Increase Font Size	Shift + Ctrl + >
Decrease Font Size	Shift + Ctrl + <
Magnetic Selection	Shift + Q
Zoom In	Ctrl + "+" or Scroll up
Zoom Out	Ctrl + "-" or Scroll down

**Shapes:**

Rectangle	M
Rounded Rectangle	Shift + M
Ellipse / Circle	L
Star	S
Polygon	X
Layers	Shift + L
Drop Shadow	Shift + D
Color Swatches	Shift + C
Image Filters	Shift + I
First Kana	A
Second Kana	[
Third Kana	{
Fourth Kana	]
Fifth Kana	}

**Q1: Can IndiaFont V4 be used on multiple systems with a single license?**

A1: No, a single license of IndiaFont V4 allows usage on one system at a time. However, you can log in with your credentials on different systems. Please note that the last login will automatically log out the previous session.

**Q2: Is there a refund policy for IndiaFont V4?**

A2: We stand by our product. IndiaFont V4 provides a comprehensive experience during the trial period, showcasing all features. As such, we do not support refunds. Rest assured, our customer support team is always ready to assist you.

**Q3: What's included in the trial version of IndiaFont V4?**

A3: IndiaFont V4's trial version spans 7 days and offers limited fonts for Hindi-Marathi, Gujarati, and English. It includes examples from all font types: Publication, Decorative, and Calligraphy.

**Q4: Is IndiaFont V4 compatible with Mac operating systems?**

A4: Yes, IndiaFont V4 is compatible with Mac OS, ensuring a seamless experience for Mac users.

**Q5: What are the system requirements for IndiaFont V4 on Windows?**

A5: IndiaFont V4 requires Windows 8 with SP1 and above. We recommend a 64-bit system, an Intel Core 2 Duo Processor as a minimum, and a minimum of 6 GB RAM for optimal performance.

**Q6: Can I use IndiaFont V4 fonts for commercial purposes?**

A6: Yes, IndiaFont V4 fonts can be used for commercial projects. Your creations are entirely your own, allowing you to explore a world of creative possibilities.

**Q7: How can I contact IndiaFont customer support?**

A7: For any queries or assistance, you can reach out to our customer support team via email or through our website's contact form. Our dedicated team is here to help you make the most of your IndiaFont V4 experience.

**Q8: Does IndiaFont V4 offer any tutorials or guides for beginners?**

A8: Absolutely! IndiaFont provides comprehensive tutorials, guides, and a knowledge base to assist beginners in mastering the software. These resources cover various aspects of IndiaFont V4, ensuring users can enhance their skills and create stunning designs.







Should you have any questions, encounter challenges, or simply want to share your creative triumphs, our support channels are readily available:

**Knowledge Base:**

Access a wealth of tutorials, guides, and FAQs designed to enhance your understanding of IndiaFont V4's features.

**Support Email:**

Reach out to our dedicated support team via email for personalized assistance tailored to your queries and concerns at [support@IndiaFont.com](mailto:support@IndiaFont.com)

**Call us:**

You can call us or ask to call you as required. Please check contact page on [www.IndiaFont.com](http://www.IndiaFont.com) for updated contact details.

At IndiaFont, we're not just providing a tool; we're fostering a community of passionate individuals driven by artistic expression. Your creativity knows no bounds, and IndiaFont V4 is here to fuel your imagination and transform your ideas into breathtaking calligraphy masterpieces.



In conclusion, IndiaFont V4 empowers your creative journey by offering a wealth of features and benefits. Let's recap the key highlights of this innovative software:

**1. Creative Freedom:**

IndiaFont V4 provides an extensive collection of fonts, tools, and features, allowing you to unleash your creativity without limitations.

**2. Easy and Intuitive:**

With a user-friendly interface, intuitive tools, and thoughtful shortcuts, IndiaFont V4 simplifies the complex process of calligraphy and design.

**3. Customization:**

The Variable Concept, Alom-Wilom, 50+ Kana's, and the Magnetic Selection Tool enable unprecedented customization, letting you create unique and personalized calligraphy artworks effortlessly.

**4. Seamless Typing:**

IndiaFont V4's Phonetic-Based Typing System ensures effortless typing for Hindi, Marathi, and Gujarati languages, eliminating the need for extensive language-specific keyboard layouts.

**5. Comprehensive Support:**

IndiaFont offers robust support channels, including a detailed Knowledge Base, dedicated support email, and active community forums. Our goal is to assist you at every step of your creative journey.